

LOST COWBOYS.COM

Patina Metals

CONCRETE LCDA



An amazing & innovative metal collection in powerful creative color combo's. Unique and arty designs in solid Copper , brass and zink are the base for our wall & floor panels and furniture products. All Pure Crafted.

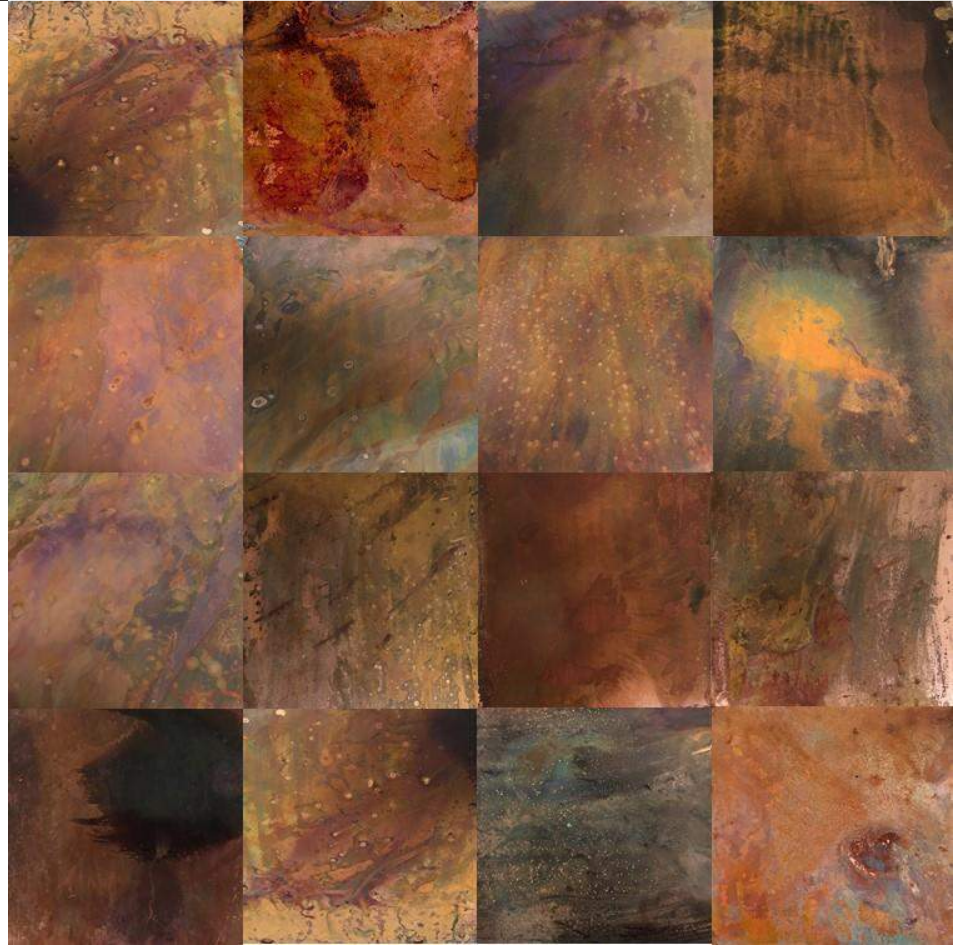
Our R&D studio is always on the hunt to find the perfect balance of technical and chemical color reactions of our metals translated in fashionable designs. Years of experiences in many metal surfaces have given us the knowledge to control our patina's and know how to play with them. We stand for our product and consistent quality.

Please contact us if your project does need something more than simple standards!





Copper
Sienna Red



Patina

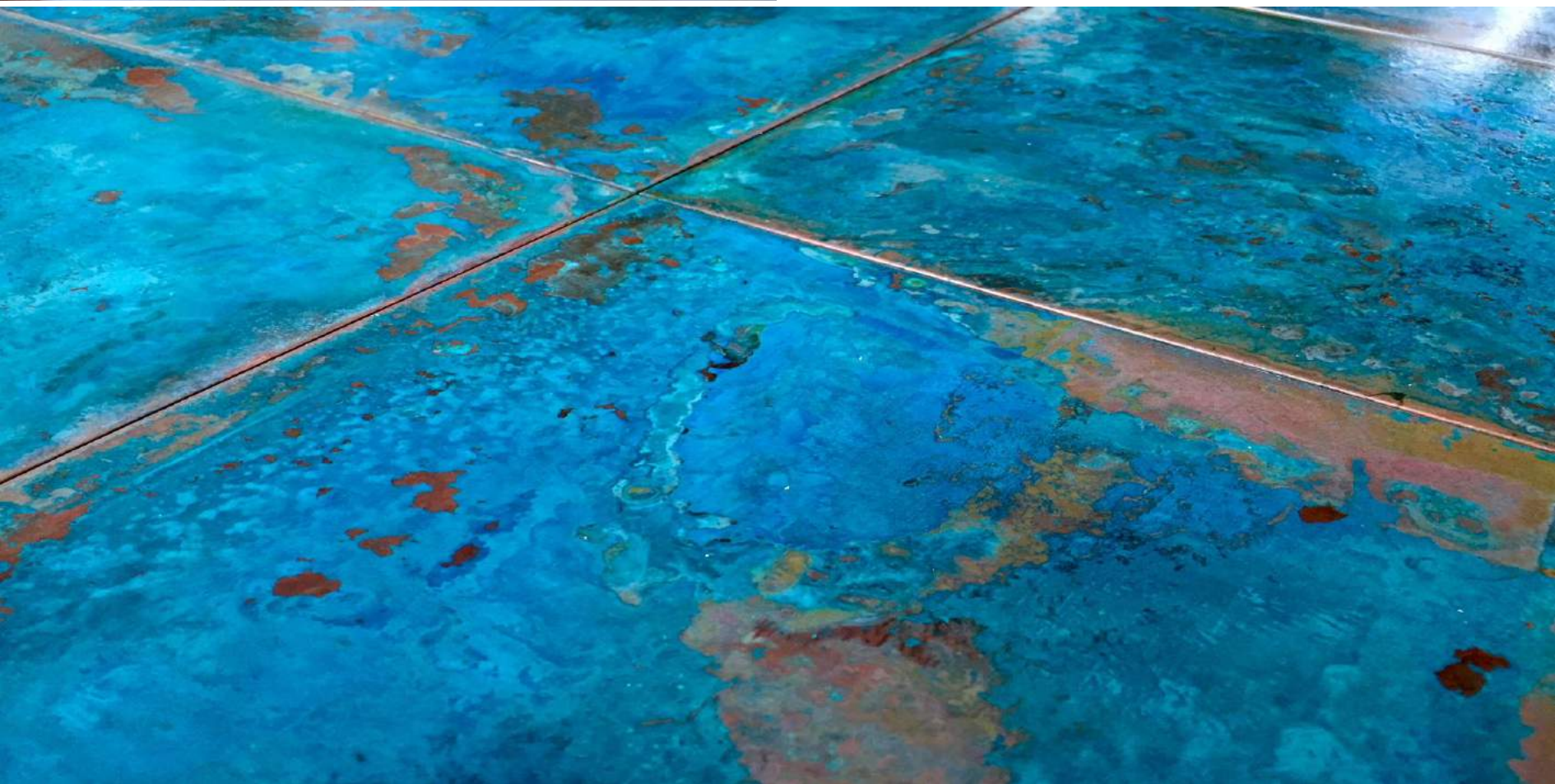
Is a natural oxidize process of metals, based on changes in humidity, temperature and climate. Overtime metals shows signs of age with characteristic textures in diverse colour palettes.

Lost Cowboys developed a technique to accelerate and control this process.

In nature, time will change continuously colouring of these patina reaction, we capture colour design by sealing the surface with a durable coating.



Copper
Jade Blue





The Patina collection is available for wall ,floor and furniture. We cover our metals with a strong and durable , scratchproof coating,
An acrylic, aliphatic polyurethane is UV resistant, anti corrosion and free of lead and chrome for indoor installation.

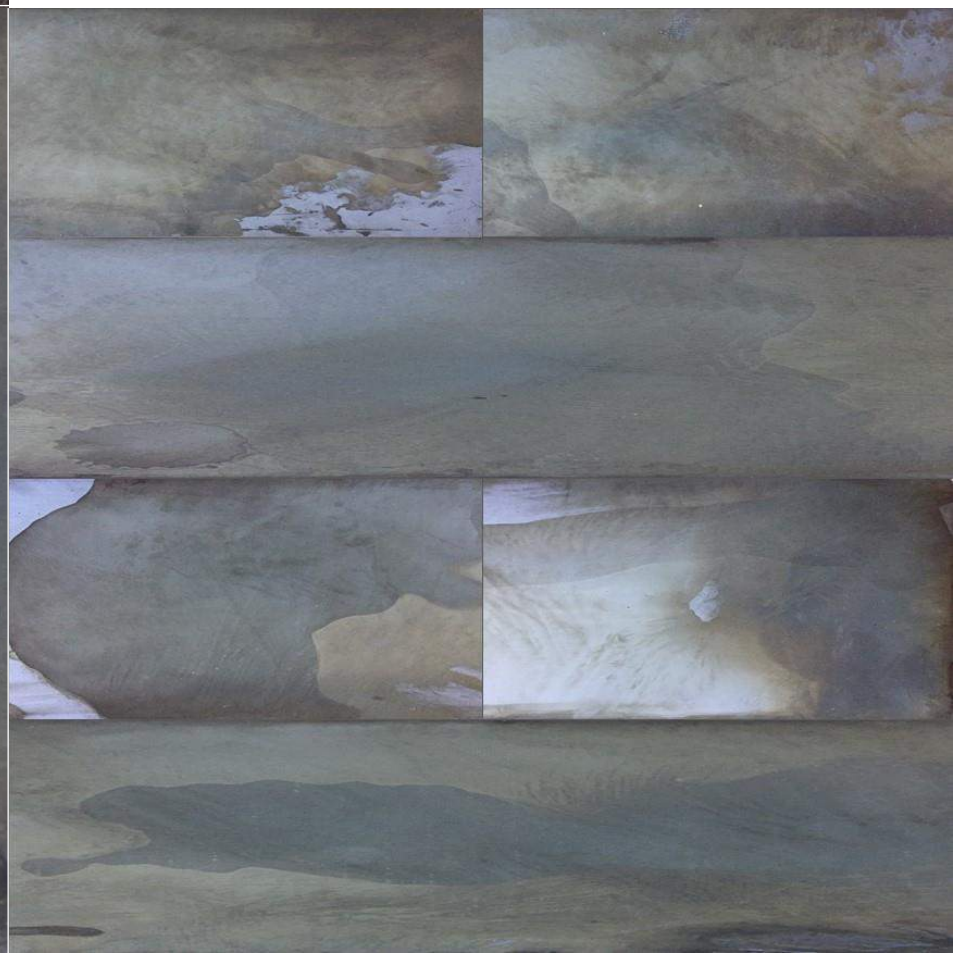
When panels will be ordered as flooring we attach a 1mm thick steel sheet as underlayer on relative soft copper and brass material and change thickness to 1mm

The panels are filled up with subfloor, noise reducing woodfiberboards that make them suitable for installation on most substrates and works with floor heating.

Copper and Brass are ***soft metals*** and It is advisable not to use our metals as flooring in high traffic areas or expose the material to heavy products that could cause indentations or other irregularities by its weight.

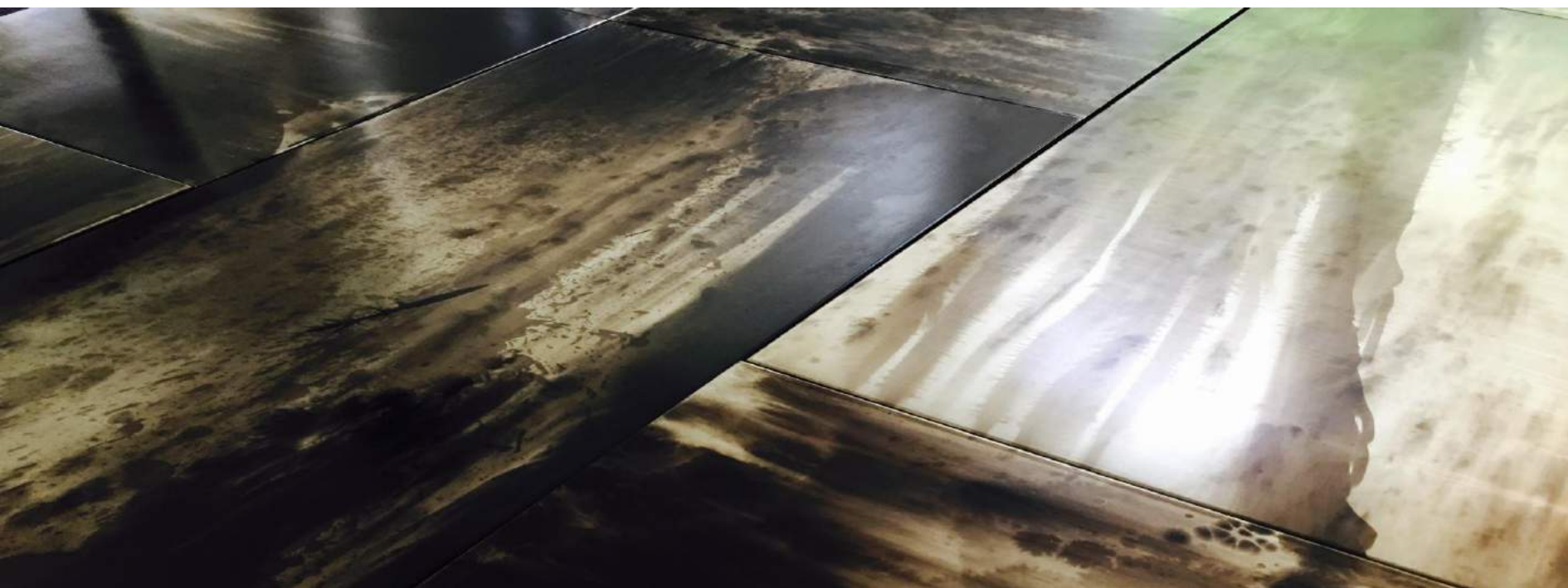


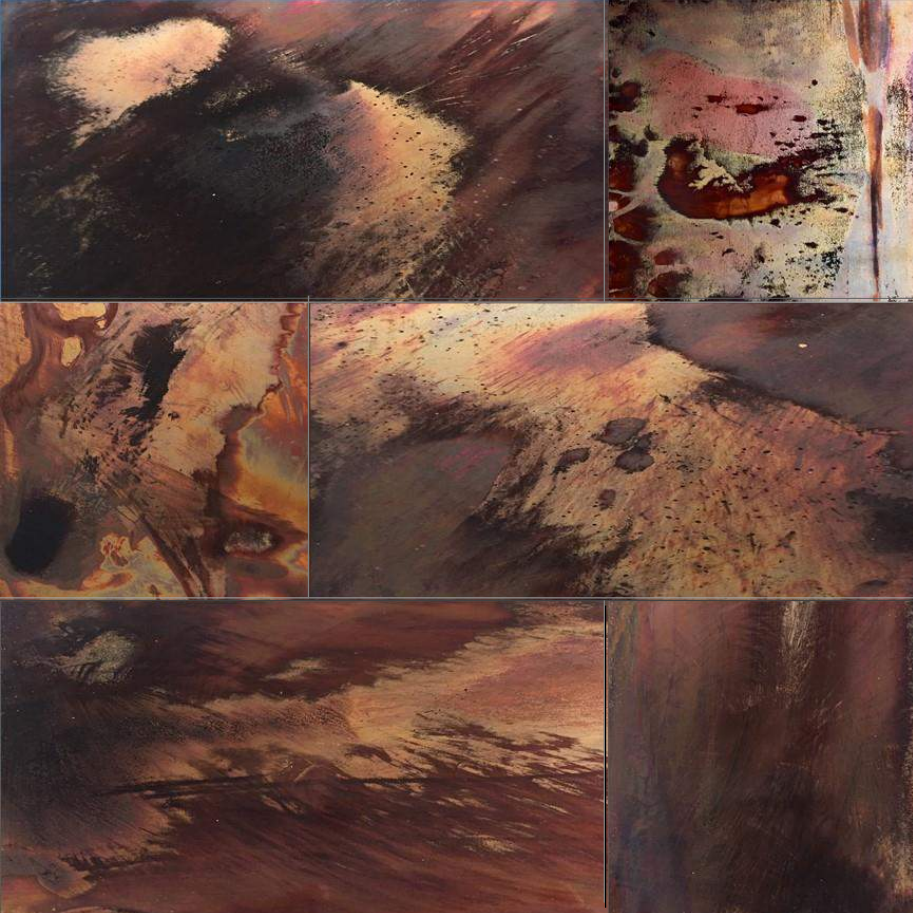
Zink
Frozen Clouds





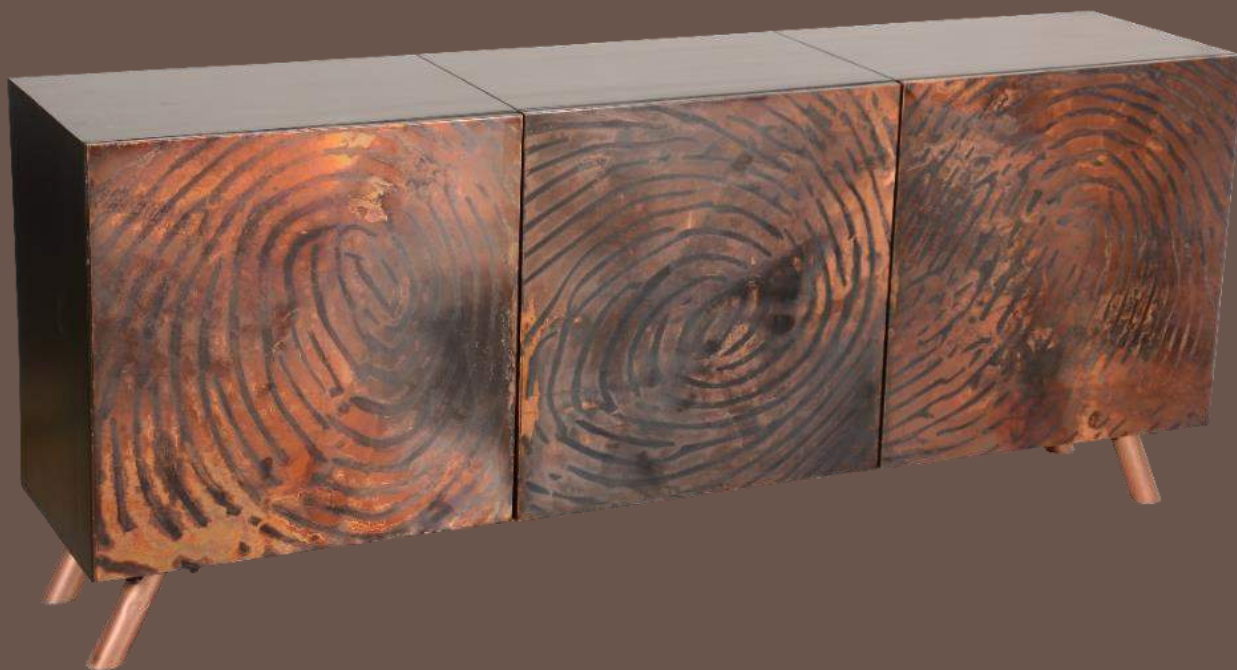
Zink
Black Spots





Copper
Lava Waves



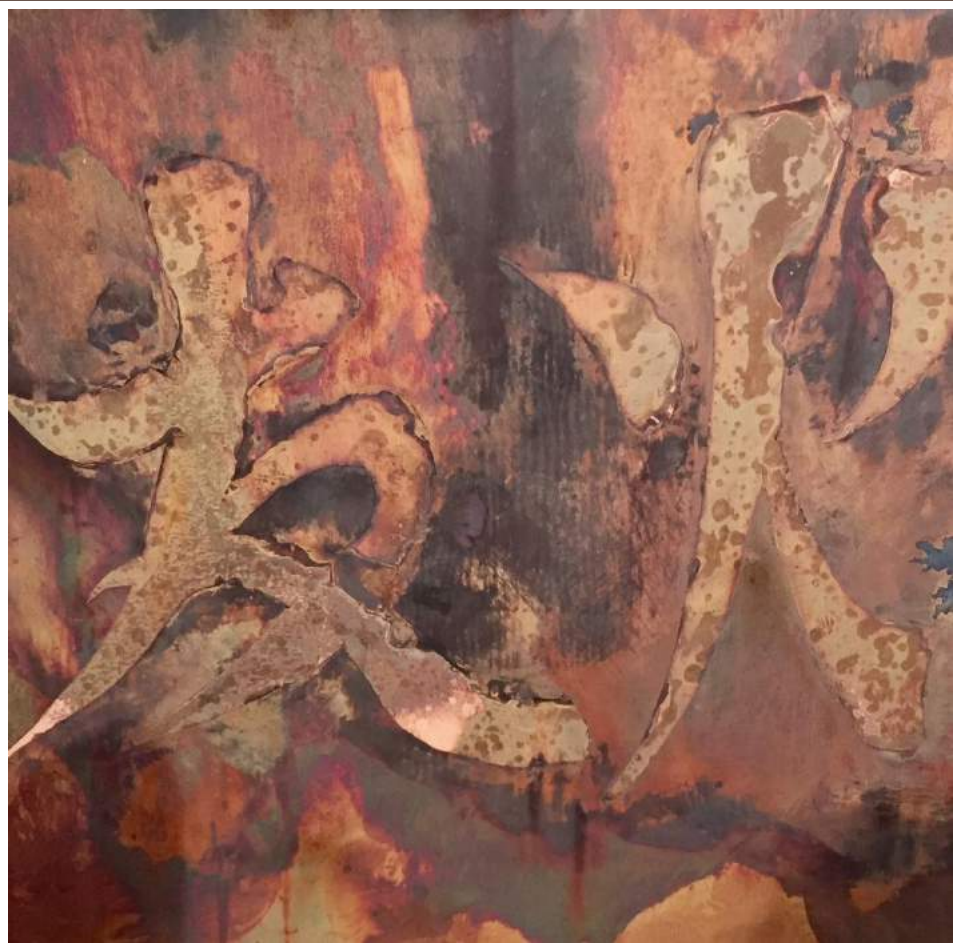


We know very well that not one project is the same and customers require in some cases a specific range of desired forms with aesthetics and architectural features.

Lost Cowboys produce per order and offer standard collections, but any customization request is also welcome.

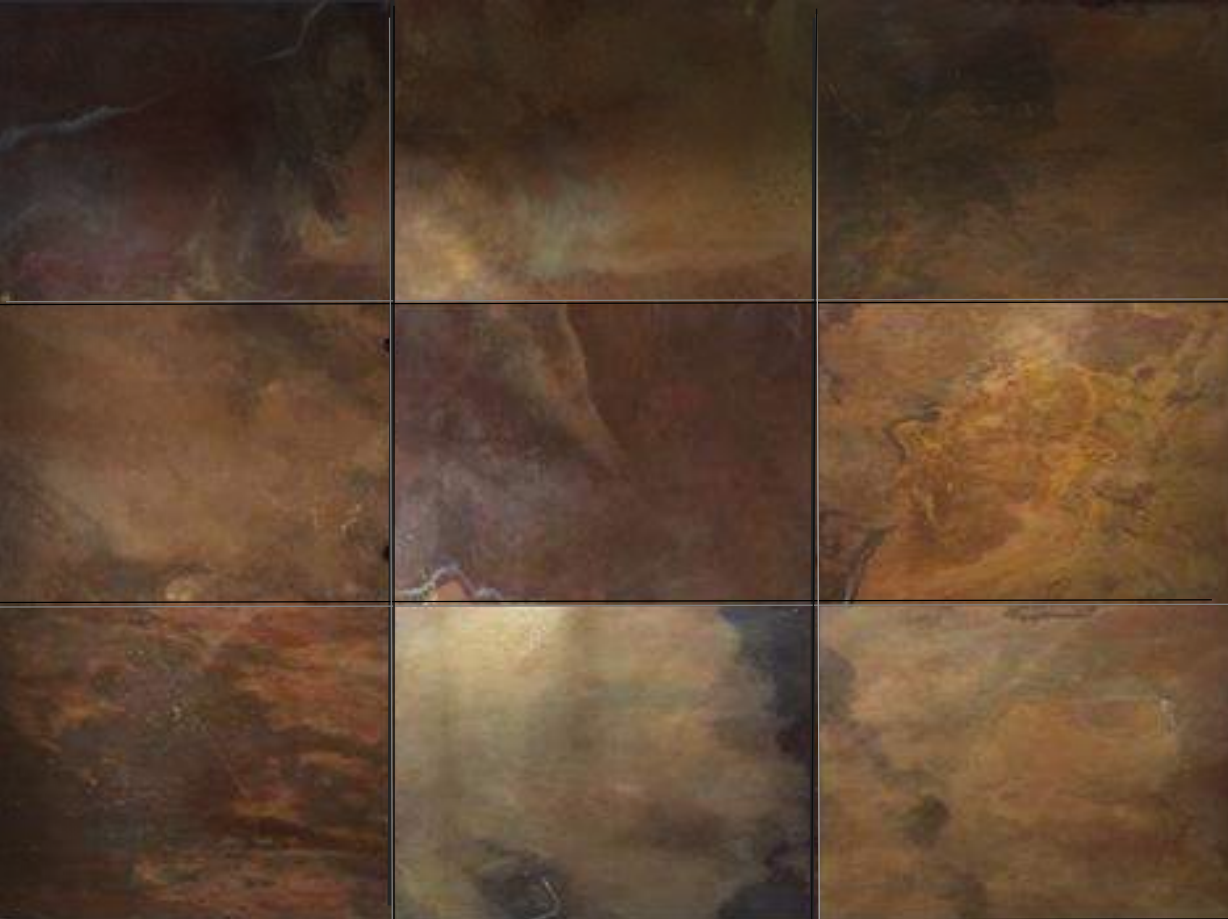
Our metals are available in several thickness which can be used for other developments than surfaces only, ex. interior and furniture products in matching patinas.

When a custom color is required other than our standard patinas, it would be challenging assignment for our design lab to develop a custom made patina that will meet your projects requirement. Just contact the color freaks in our studio lab.





Copper
Pastel



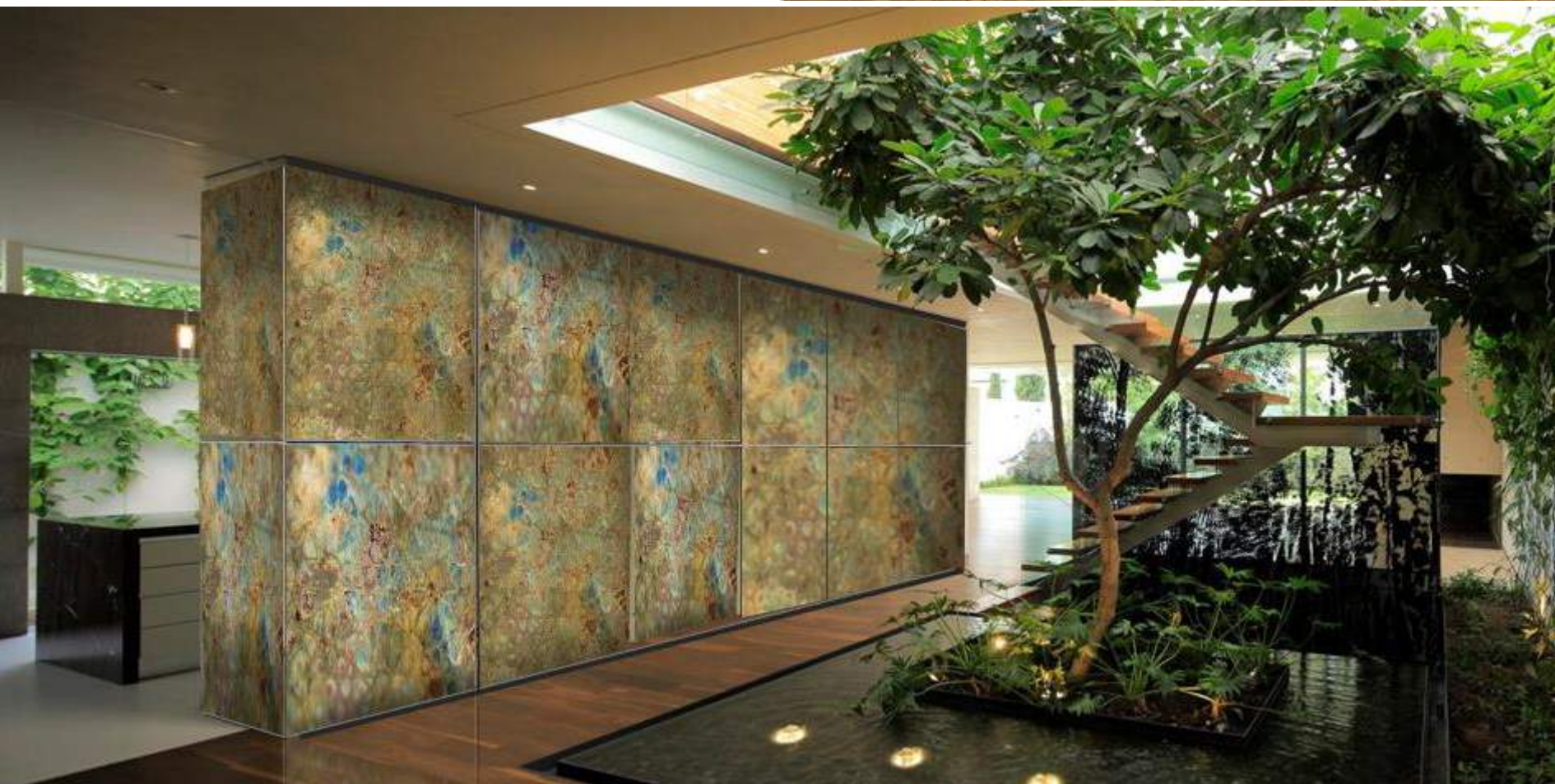
Brass
Dirty Moon





Brass
Bahia

Brass
Muddy Swamp



Product information

Panels

300 x 300 x 10 mm	11,81 x 11,81 x 0,40"
450 x 450 x 10 mm	17,72 x 17,72 x 0,40"
600 x 300 x 10 mm	23,62 x 11,81 x 0,40"
600 x 600 x 10 mm	23,62 x 23,62 x 0,40"
450 x 900 x 10 mm	17,72 x 35,43 x 0,40"
900 x 900 x 10 mm	35,43 x 35,43 x 0,40"

Sheets

240 x240 mm	9,45 x 9,45"
240 x 490 mm	9,45 x 19,29"
490 x 490 mm	19,29 x 19,29"
490 x 1000 mm	19,29 x 39,37"
190 x 1000 mm	9,45 x 39,37"
1000 x 2000 mm	39,37 x 78,74"

*We offer custom made dimensions in several thickness, maximum size = 2000x1000

Material	Thickness use indoor-outdoor	weight KG per sqm	weight LBS per sq ft	EURO Fireclasses
Copper DHP/R240	0,5mm-indoor 1mm outdoor	4,5 9	0,92 2,76	A
Brass CuZn37	0,5mm-indoor 1mm-outdoor	4,3 12,9	0,88 2,63	A
Zinc Electropl. DC01+ZE25	0,5mm-indoor 1mm-outdoor	4 12	0,82 2,45	A

Panel fillers

EPS – SE ;
suitable for wall covering , in- and outdoor installation:s: isolating and fire certificated Euroclass B.
Fiberwood ;
suitable for wall and floor, only indoor installation. isolating and floorheating (Water) proof.
Sound reducing 21dB TUV tested NEN-EN-ISO 10140 . Fire rated Class E.

* Add 8 kg per sqm / 1,63 LBS per sq feet on floor panels in copper and brass designs.

Coatings

The choice of coating is depending on : Patina color design, Indoor / outdoor installation, Wall or floor covering
We offer 4 different coatings in 1K– 2K – NANO coating and Epoxy ; we will advise best option per project.

Installation & Application

We recommend that all metal products, adhesives and the substrates are to be bonded to remain in the same environment for a period of 3 days for optimal pre-conditioning. A minimum of 48 hours is recommended for pre-conditioning. These times are recommended although decorative metals have minimal dimensional change. Following these recommendations will allow the adhesive to create a strong and firm bond between the substrate and the metals what will minimize potential dimensional change.

Substrates

Proper substrates must be used and careful bonding procedures observed. Substrates should be good quality plywood, high density particleboard, high quality fiberboard or MDF. Acrylics can be a suitable substrate, especially in smaller sizes, like in retail fixturing. The more resistant the substrate is to dimensional change (shrinkage and/or expansion from changes in humidity and temperature) the better the long-term results.

Lead time	: 3-4 weeks
Production	: The Netherlands
Shipping	: Rotterdam
Packing	: Carton box / full sheets on pallets
MOQ	: standard dimensions 6 sq mtr /52 sq ft Customized 10 sq mtr / 100 sq ft





Sand Storm Brass



Copper Lava Waves



Brass Muddy Swamp



Copper Jade Blue



Zink Frozen Clouds



Copper Red Desert



Copper Sienna Red



Brass Lava Waves



Zink Black Spots



Brass Dirty Moon



Copper Flames

All products are individual handcrafted decorated and because designs are the results of chemical reactive process each will be unique. We control color tones , design shapes will always have a rich diversity.



Please contact us for additional information
or samples

Catherine Lucas

Concrete LCDA
8 Rue Copernic
49420 Avrillé FRANCE
+33 (0)6 29 22 46 46
c.lucas@concrete-beton.com

www.concrete-beton.com

